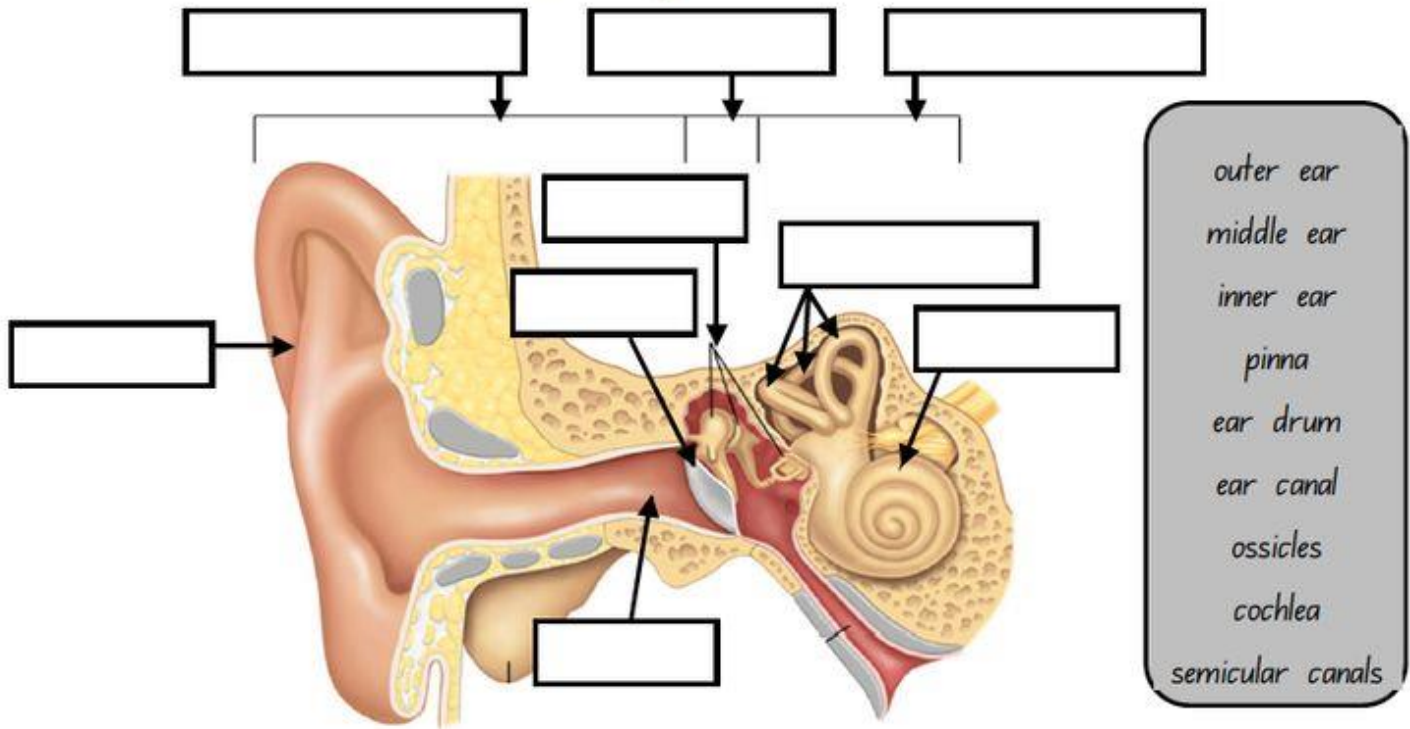


The Ear

Label all the parts of the ear.



What is the role of the **pinna**?

What is the role of the **semi-circular canals**?

What is passed on from the **eardrum** to the three **ear bones**?

What would you find in the **Cochlea**?

How do we hear? (fill in the gaps....)

..... waves travel into the ear canal until they reach the eardrum. The eardrum passes the vibrations through the middle ear bones or into the inner ear. The inner ear is shaped like a snail and is also called the Inside the cochlea, there are thousands of tiny cells. These cells change the vibrations into signals that are sent to the through the hearing nerve. The brain tells you that you are hearing a sound and what that sound is.

Ossicles	Electrical	Hair
Sound	Brain	Cochlea